

NEWS

ISN

ISN NEWS 50 August 2014

50th Edition

It's all about teamwork

ISN partners and collaborators
advancing nephrology

INSIDE THIS ISSUE

- 03 News in brief**
All the latest from the Society
- 04 ISN patron HRH Prince Daniel of Sweden**
Bringing his transplant experience to partner with ISN
- 07 ISN partnerships and collaborations**
Meet our sponsors, partners and affiliated societies
- 09 ISN SRC success story**
Belarus in top 10 countries for organ donation and transplantation worldwide
- 11 Kidney Health for Life**
A multinational inventory summarizing CKD burden and current practices
- 12 ISN 0by25 initiative**
Making an ambitious goal a reality
- 13 YNC Corner**
Free membership for members in training
- 14 ISN Education**
Celebrating two years of sharing knowledge
- 15 ISN upcoming events**
WCN 2015 abstract submissions



Advancing Nephrology Around the World



Executive Committee

Giuseppe Remuzzi (Italy) - President
John Feehally (United Kingdom) - Past President
Adeera Levin (Canada) - President-Elect
Ricardo Correa Rotter (Mexico) - Secretary General
Stuart Shankland (USA) - Treasurer
Susan Quaggin (Canada) - Council Representative
Peter Kerr (Australia) - Council Representative
Chih-Wei Yang (Taiwan) - Presidential Appointee
Bernardo Rodríguez-Iturbe (Venezuela) - Presidential Appointee
David Harris (Australia) - Publications Committee Chair

Council

Africa

Boucar Diouf (Senegal)
Maher Fouad Ramzy (Egypt)

Asia/Pacific

Sanjay Agarwal (India)
Vivekanand Jha (India)
David Johnson (Australia)
Somchai Eiam-Ong (Thailand)
Peter Kerr (Australia)
Suhnggwon Kim (Republic of Korea)
Zhi Hong Liu (China)
Sadayoshi Ito (Japan)
Harun Rashid (Bangladesh)
Rezvi Sheriff (Sri Lanka)
Chih-Wei Yang (Taiwan)

Europe

Jorge Cannata-Andia (Spain)
Dick de Zeeuw (The Netherlands)
Kai-Uwe Eckardt (Germany)
Meguid El Nahas (UK)
Francesco Locatelli (Italy)
Klaus Ølgaard (Denmark)
László Rosivall (Hungary)
Peter Stenvinkel (Sweden)
Irma Tchokanelidze (Georgia)

Latin America

Mirian Boim (Brazil)
Sergio A. Mezzano (Chile)
Roberto Pecoits-Filho (Brazil)
Laura Sola (Uruguay)

Middle East

Mona Alrukhaimi (United Arab Emirates)

North America

Roland Blantz (USA)
Joseph Bonventre (USA)
Alfred Cheung (USA)
Allison Eddy (USA)
Bertram Kasiske (USA)
Susan Quaggin (Canada)
Marcello Tonelli (Canada)

ISN Committee Chairs

Acute Kidney Injury Committee - Ravindra Mehta (USA)
ISN-ANIO India Committee - John Feehally (UK)
Awards Committee - John Feehally (UK)
Clinical Practice Guidelines Committee - Gavin Becker (Australia)
Dialysis Committee - Fredric Finkelstein (USA), Nathan Levin (USA)
Education Committee - David Harris (Australia)
Forefronts Committee - Kai-Uwe Eckardt (Germany)
History of Nephrology Committee - Leon Fine (USA)
Interventional Nephrology Committee - Miguel Riella (Brazil)
Nexus Committee - Kumar Sharma (USA)
Nominating Committee - Joanne Bargman (Canada)
Publications Committee - David Harris (Australia)
Renal Disaster Relief Task Force - Raymond Vanholder (Belgium)
Renal Pathology Advisory Committee - Agnes Fogo (USA)
Young Nephrologists Committee - Jeff Perl (Canada)

ISN Programs Committee Chairs

ISN Programs Core Committee - John Feehally (United Kingdom)
CME Program - Fredric Finkelstein (USA)
Education Ambassador Program - Saraladevi Naicker (South Africa)
Fellowship Committee - David Harris (Australia)
Kidney Health in Disadvantaged Populations Committee - Guillermo Garcia Garcia (Mexico)
Research and Prevention Committee - Marcello Tonelli (Canada)
Sister Renal Centers Program Committee - Paul Harden (UK)

ISN Programs Regional Committees

Africa Committee - Mohammed Benghanem Gharbi
East Asia Committee - Ming Hui Zao (China)
Eastern and Central Europe Committee - László Rosivall (Hungary)
Latin America Committee - Ezequiel Bellorin-Font (Venezuela)
Middle East Committee - Mona Alrukhaimi (UAE)
Oceania & South-East Asia Committee - Peter Kerr (Australia)
Russia and CIS Committee - Elena Zakharova (Russia)
South Asia Committee - Vivekanand Jha (India)

EDITORIAL

Together we are stronger

ISN has a global mission, and it is obvious that we cannot possibly identify and meet the many different challenges in the global kidney community by working alone. That is why partnership is our continuing watchword.

This edition of ISN News showcases the variety and richness of our many partnerships. For every setting and every challenge, the question we always ask ourselves: if we want to achieve more, who should be our partner in this venture?

Our partners come from within the kidney community but increasingly from beyond it as well. We have those who share their expertise and broaden our understanding and who bring their different perspectives and local knowledge. Others provide resources to deepen our programs and accelerate the benefits they bring. Finally, some partners help us proclaim our messages about the devastating effects of kidney disease and the real opportunities that now exist by developing sustainable capacity to prevent kidney disease, identify it early, and transform care for people with kidney disease in different resource settings worldwide.

The variety of these collaborations is definitively what has made us evolve into the Society that we are today. Showcasing this success is why there is no better way to celebrate this 50th edition of ISN News. Individuals, societies, foundations, commercial and non-profit organizations make up the ISN family and together we are stronger in the fight against kidney disease.

I hope you enjoy this celebratory edition of ISN News.

ISN Past President and ISN Programs Chair John Feehally

John Feehally trained in nephrology in Manchester and Leicester, UK, and in Boston USA. He was appointed Consultant Nephrologist at Leicester General Hospital in 1988, and in 1999 became Honorary Professor of Renal Medicine at the University of Leicester, UK. He was the ISN President from 2011 to 2013. His particular clinical interests are in glomerulonephritis and renal transplantation.



ISN News

Published by ISN
Staff Editor: Sally Horspool
ISN Executive Director: Luca Segantini

The contents of this publication are compiled in good faith. The publisher accepts no responsibility for omissions or errors.

Design www.landmarks.be

Global Operations Center

Rue des Fabriques, 1
B-1000 Brussels, Belgium
Tel: +32 2 808 04 20
Fax: +32 2 808 4454

Email: info@theisn.org URL: www.theisn.org

US Operations Center

340 North Avenue 3rd Floor
Cranford, New Jersey
Tel: +1 567 248 703
Fax: +1 908 272 7101

ISN Corporate Members

abbvie

FRESENIUS
MEDICAL CARE

AMGEN®

SANOFI RENAL

DANONE
NUTRICIA
RESEARCH

Shire

News in brief

Adeera Levin awarded Kidney Foundation of Canada Medal for Research Excellence



We would like to congratulate ISN President-Elect Adeera Levin on being awarded Kidney Foundation of Canada Medal for Research Excellence 2014. As a nephrologist and researcher at the University of British Columbia, based at St. Paul's Hospital, Providence Health Care, she is the first British Columbia researcher to receive this award.

Levin's research has focused on early kidney disease and its association with other conditions, particularly cardiovascular disease (CVD). She is also lead investigator of the Prediction of Death, Dialysis and Interim Cardiovascular Events (CanPREDDICT) study, a large pan-Canadian project focusing on improved understanding of factors leading to renal and cardiovascular outcomes in CKD patients.

László Rosivall awarded the 27th International Khwarizmi Award

We would like to congratulate László Rosivall, ISN Council Member and Director of the Institute of Pathophysiology and Chairman of the PhD School on Basic Medicine at Semmelweis University, for receiving the 27th International Khwarizmi Award, one of the most prestigious scientific prizes in Iran. The award was handed over by the President of the Islamic Republic of Iran.



Happy 50th edition ISN News

This is our 50th edition of ISN News. Much as ISN has grown as a Society, our publication has also gone from strength to strength. In recent years, those involved in the ISN Programs have been the focus of many pages.

Giving voice to the ISN Young Nephrologists Committee has opened doors for younger generations to learn too. Educational activities have been covered extensively through reports on ISN Forefronts, ISN Nexus and the World Congress of Nephrology. We also have continued to raise awareness about prevention through regular World Kidney Day updates.

We expect the next 50 editions to be even more exciting, with news about such topics as the Oby25 initiative, ISN Education and Saving Young Lives projects.

Stay up to date with the latest issues of ISN News:
www.theisn.org/isn-information/isn-news/itemid-527



Membership

ISN Membership - make a difference

ISN connects science and humanitarian efforts. Through education, ISN is reaching out to global medical communities, giving them the knowledge and support to reduce the impact of kidney disease worldwide. Membership to ISN supports these activities and provides member specific benefits including exclusive eligibility for ISN capacity building programs, online and print subscription to *Kidney International* and *Nature Reviews Nephrology*, online training and education, and reduced registration fees to ISN events. Not yet a member? Visit: **www.theisn.org/join**

Update your membership and profile

To ensure you receive all your benefits, please keep your profile up to date and renew your membership in a timely manner. Access or update your profile at:
www.theisn.org/memberlogin



An appointment with royalty

ISN patron HRH Prince Daniel of Sweden brings his transplant experience to partner with ISN and raise the profile of kidney health globally.

On June 9, 2014, ISN President Giuseppe Remuzzi, Peter Stenvinkel and ISN Executive Director Luca Segantini met ISN's patron His Royal Highness (HRH) Prince Daniel of Sweden. As a kidney transplant recipient, Prince Daniel has a strong personal interest in kidney disease and global health issues.

From left to right: Prince Daniel of Sweden, ISN President Giuseppe Remuzzi, Prof. Peter Stenvinkel and ISN Executive Director Luca Segantini.



“If you are willing to receive an organ you should also be willing to save another person’s life by donating.”

Through this high-level partnership, ISN and Prince Daniel hope to raise more awareness about prevention, transplantation and the importance of organ donation. During the meeting, they discussed how countries in the European Union deal with organ donation and transplantation, cultural values as well as legal, administrative and organizational issues.

Personal experience turns to raising public awareness

Before marrying into the Swedish royal family, a teenage Daniel Westling had a simple blood test that revealed he had chronic kidney disease (CKD). Some 20 years later, his renal function was so poor that he began hemodialysis. It helped him understand the difficulty of CKD patients on this life-supporting treatment. After his engagement to Crown Princess Victoria, he underwent a successful transplant operation at Karolinska University Hospital, with his father as the donor. A year later, he married the Crown Princess in Stockholm.

So, with a strong interest in health issues and disease prevention, Prince Daniel started studying physiology, physical activity and health in 2011 at the Karolinska Institutet. In 2013, he continued his studies in physiology and took courses in transplantation, geriatrics, nephrology and pathology.

Prince Daniel showed much interest in Prof. Peter Stenvinkel’s lectures in clinical nephrology and Prof. Bo-Göran Ericson’s courses in renal and liver transplantation. The course also included hands-on training in diagnosing renal and liver pathology under the supervision of pathologist associate Prof. Annika Wernersson.

More importantly, Prince Daniel met patients at the Renal, Transplantation and Pathology units at the Karolinska University Hospital who had undergone kidney or liver transplantation. This official visit received attention from the Swedish press and appeared in a television documentary about the royal family.

Becoming patron

Prince Daniel was informed about ISN’s educational and research-promoting activities during discussions about risk factors for CKD, global differences in the prevalence of renal disease and the difficulties to provide renal replacement therapy in many parts of the world.

Former ISN President John Feehally was informed about his interest in global renal healthcare and invited Prince Daniel to become an ISN patron. In a recent interview Prince Daniel stated: “if you are willing to receive an organ you should also be willing to save another person’s life by donating” and urged the Swedish population to take a stand and join the donation registry.

During the June meeting with the ISN delegation, Prince Daniel was extensively informed about ISN’s general activities and programs alleviating the growing socio-economic burden of kidney disease.

It was also the chance to showcase how ISN members are working together on the global ISN Oby25 initiative to build more health equality worldwide. This initiative stipulates that nobody should die of preventable and treatable Acute Kidney Injury (AKI) by 2025. ISN President Giuseppe Remuzzi and the Society as a whole are delighted that Prince Daniel has joined ISN in raising awareness about health issues surrounding kidney disease and are looking forward to increasing its global profile together.



© Kungahuset.se

YOU CAN HELP TURN THEIR WORLD AROUND

ISN

BECOME A MEMBER **THEISN.ORG**
AND HELP ISN ADVANCE KIDNEY CARE

Advancing Nephrology around the World



A growing family

ISN is building a strong team to move forward with its mission of advancing kidney research and care worldwide.

Improving nephrology practice and raising awareness about kidney disease cannot be achieved alone. ISN has evolved into the Society it is today thanks to partnerships and collaborations that continue to grow. Sharing common goals is how companies, affiliated societies and partner organizations have joined us in fulfilling our mission by sponsoring events, co-funding fellowships and helping set up courses.

Partner societies

This year, the Asia Pacific Society of Nephrology (APSN) has co-funded several ISN programs including four Continuing Medical Education courses, two Clinical Research and Prevention projects and five Sister Renal Center pairs. More and more ISN Fellowships have become possible with support from the European Renal Association-European Dialysis and Transplant Association (ERA-EDTA), ISN-ANIO Committee, Hong Kong Society of Nephrology, CREED, AMGEN, KRUK, The Renal Association, Abbvie and the International Pediatric Nephrology Association (IPNA). Besides co-funding ISN Fellowships, the Sociedad Latino Americana de Nefrologia y Hipertension recently accepted to support Educational Ambassador visits to Latin America.

The International Society of Peritoneal Dialysis (ISPD) and ISN also want to ensure the development of peritoneal dialysis worldwide, mainly through the Saving Young Lives project, which also partners IPNA and the Sustainable Kidney Care Foundation.

In 2008, ISN and The Transplantation Society (TTS) worked on preparing content for the Istanbul Declaration on Organ Trafficking and Transplant Tourism. Their efforts culminated in the Declaration being finalized at the International Summit in Istanbul, Turkey. In April 2013, the ISN-TTS Sister Transplant Center Program was launched thanks to this partnership.

Affiliated societies

To develop a more effective network among renal organizations worldwide, ISN has established and intensified its relationships with national and regional renal societies by creating formal affiliations. There are currently official society affiliations with 77 national and regional societies. It is increasingly important for ISN to bring together the global nephrology community through these affiliations to successfully lobby health authorities and create awareness on a global scale yet appropriate to regional necessities and situations.

Corporate partners

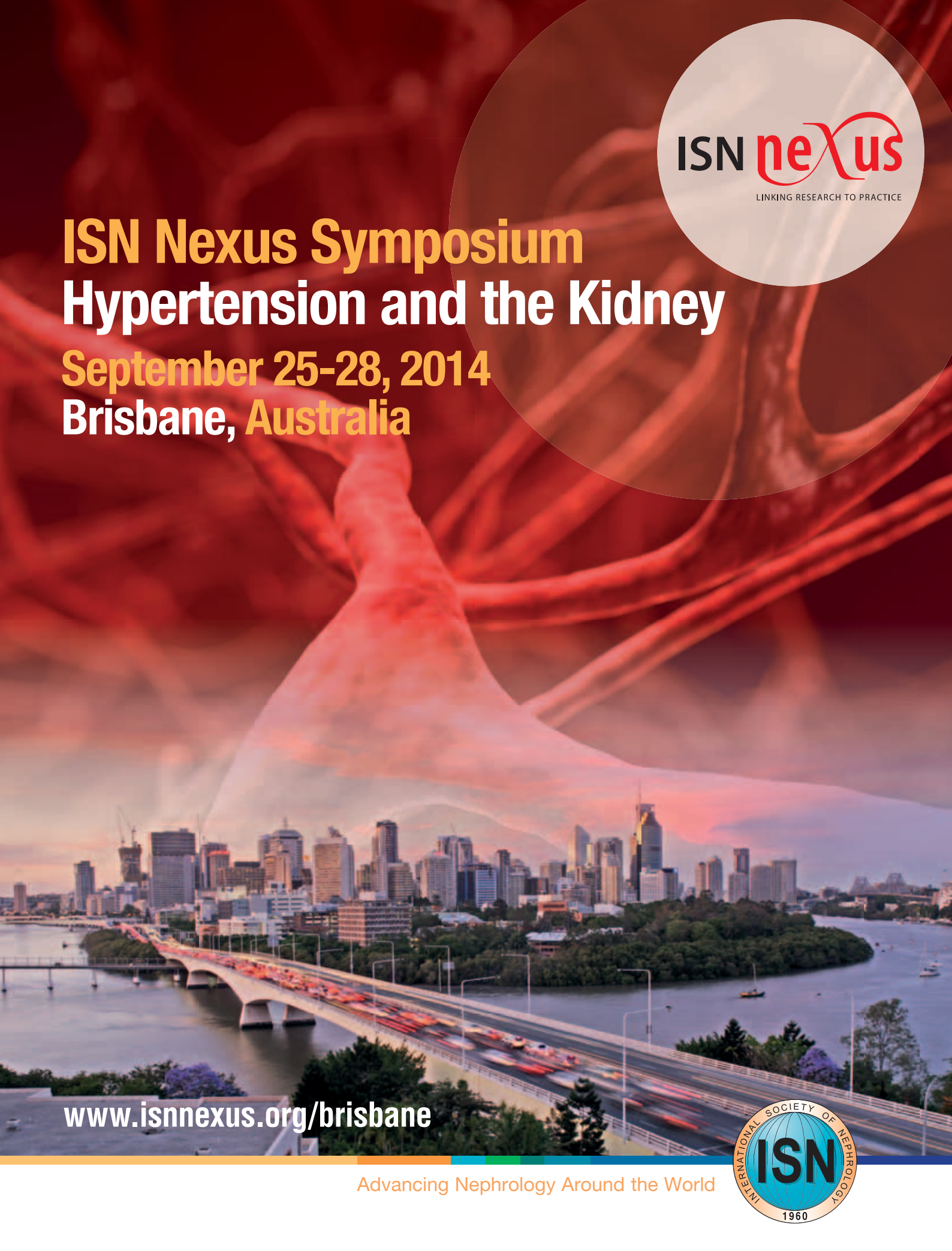
The Corporate Members Committee helps ISN promote the knowledge and understanding of the role of the kidney in disease and health, as well as increase awareness about kidney disease and promote collaborations with other relevant specialties or stakeholders. Current corporate partners include Abbvie, Amgen, Danone Nutricia Research, Fresenius Medical Care, Roche, Sanofi and Shire.

To find out more about
ISN partners and
collaborations, visit:
[www.theisn.org/
isn-information/
partners-and-affiliates/
itemid-484](http://www.theisn.org/isn-information/partners-and-affiliates/itemid-484)





ISN Nexus Symposium **Hypertension and the Kidney** **September 25-28, 2014** **Brisbane, Australia**



www.isnnexus.org/brisbane

Advancing Nephrology Around the World



Sister Renal Center success story

Belarus in top 10 countries for organ donation and transplantation worldwide.

Last year, Belarus became one of the top 10 countries for organ donation and deceased donor kidney transplantation. This achievement would not have been possible without a valuable partnership between renal centers in the UK, Belarus and Russia.

In 2010, the ISN Sister Centers collaboration between the Kidney Unit at Oxford Radcliffe Hospital, UK and the National Center of Nephrology, Dialysis and Kidney Transplantation in Minsk, Belarus led to 18 successful pediatric transplants in Belarus.

"The ISN Minsk-Oxford collaboration has been enlightening, exciting and rewarding for participants from the emerging and supporting centers," explains liaison officer Aleh Kalachyk.

The country has four transplant centers (Brest, Grodno, Gomel and Minsk) and a pediatric transplant center in Minsk. Overall, 310 kidney transplants were performed in 2013 compared to 70 in 2008. Since the Oxford-Minsk partnership started in April 2009, 79 pediatric kidney transplants have also been carried out.

ISN Sister Renal Centers Program (SRC) Chair Paul Harden believes that the growth of sister center partnerships puts undeniable efforts into developing more transplant opportunities. The Belarus-Oxford pair has now formed a trio partnership with the Saratov State Medical University Regional Hospital in Russia, offering clinical staff training in nephrology and renal transplantation. In 2012, they began preparations to set up a new kidney transplant program in the Russian center. The first of several cases were carried out at the end of 2013.

The first regional Continuing Medical Education course took place in Saratov helping to update clinical services for the increasing number of patients on hemodialysis. Many patients over 65 years old now have access to dialysis. The diversity in participants reflected the energy of the CIS Regional Committee, the number of new members from outside the Moscow and St Petersburg circuit and the increasing awareness of what ISN has, and can, contribute to enriching nephrology in the region.

Increasing transplantation opportunities in the developing world is a strong priority for the ISN SRC Program. Success in carrying out this life-saving procedure is due to the dynamism of trio and traditional partnerships, and the dedication and humanitarian enthusiasm of the clinical teams involved.

First Joint SRC: Aleh Kalachyk (2nd from right) and Paul Harden (3rd from right).



The Minsk team at the centre in Bishkek (Kyrgyzstan).



Find out more about the ISN SRC Program at www.theisn.org/src or read about all the ISN Programs at www.theisn.org/programs

The next application deadline for the SRC Program is September 15, 2014.

Minsk team in Astana Kazakhstan.



ISN Education

BRINGING NEPHROLOGY KNOWLEDGE TO YOUR DESKTOP

What's in it for you?

Check out ISN's brand new gateway offering the latest educational resources tailored by our leaders and experts in nephrology.

VISIT US NOW!
www.theisn.org/education



GLOBAL OUTREACH POSTINGS

Supporting the publication of nephrology manuscripts from around the world

New to *ISN Education*, Global Outreach Postings help nephrologists from emerging countries publish manuscripts that are in line with ISN's mission and of interest to readers worldwide, including in developing countries. A team of reviewers from all over the world work together to help and support, and bring your manuscript to publication standards.

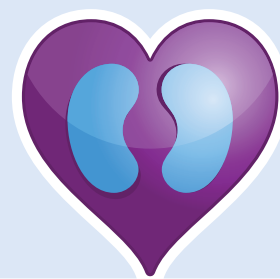
Publish yours now! www.theisn.org/gopostings

Advancing Nephrology Around the World



Kidney Health for Life

A multinational inventory summarizing CKD burden and current practices across 17 European countries, Israel and Canada is released.



Kidney Health for Life

In most countries, Chronic Kidney Disease (CKD) is not a healthcare priority even though it is seen as a silent killer.

Under the umbrella of ISN, The Alberta Kidney Disease Network (AKDN) developed the systematic international inventory under the Kidney Health for Life Initiative (KH4L), with support from an unrestricted grant from AbbVie. The first author of the report is Canadian nephrologist Dr. Aminu Bello.

Marcello Tonelli, Chair of the ISN Clinical Research and Prevention Committee, representing AKDN: "We set out to understand the structure, organization and delivery of CKD care across countries by identifying key elements of each health system. We especially looked for opportunities to share best practices between countries to optimize the care of kidney patients."

According to the findings, lack of government commitment, limited funding with competing priorities, lack of structures and poor coordination as well as low awareness about CKD are currently the key obstacles to effective care.

Ireland, Norway and the United Kingdom are the only countries of the 19 surveyed that have a national service framework for CKD; 11 out of the 19 have CKD care guidelines available, with a variable degree of implementation. None of the countries with guidelines have established schemes to monitor adherence – except the UK Quality Outcomes Framework, which rewards performance for achieving certain thresholds in quality of care.

Italy has the highest number of nephrologists with 94 per 1,000 early stage renal disease (ESRD) patients. Turkey has the lowest with 7 per 1,000 ESRD patients. All countries except Portugal, Canada, UK, Turkey and Ireland have at least one nephrologist per 50 ESRD patients.

Groups of healthcare professionals, representing the different disciplines needed for comprehensive CKD care, were lacking as only eight countries had organized multidisciplinary teams. In its advocacy role, ISN aims to address these findings with major stakeholders including Health Ministries, the World Health Organization, the United Nations, the European Union and the World Bank and increase the profile of CKD as a major public health issue among non-communicable diseases. The CKD inventory now serves as a benchmark for assessing the quality of CKD care and will be used as a prototype for future ISN work worldwide.

"We set out to understand the structure, organization and delivery of CKD care across countries by identifying key elements of each health system."

Marcello Tonelli

For more information and to download the Multinational Inventory on Chronic Kidney Disease, visit:
www.theisn.org/kh4l-inventory

Oby25 initiative update

No preventable deaths from Acute Kidney Injury by 2025 - making an ambitious goal a reality.

In June 2013, during the World Congress of Nephrology in Hong Kong at the beginning of his ISN presidency, Giuseppe Remuzzi presented a human right case statement entitled “Oby25” which advocates that nobody should die of preventable and treatable Acute Kidney Injury (AKI). Now, ISN has created a dedicated team of leading nephrologists and other supporters who are working hard to achieve this ambitious goal.

AKI is a major global healthcare challenge with an estimated 13.3 million cases every year. The situation is particularly tragic in developing countries, where the annual burden is estimated to be 11.3 million cases. Although it is often preventable and treatable, with few if any long-term health consequences, a lack of early identification and treatment in these regions means that many patients do not receive essential care before it is too late.

The overall mission of Oby25 is to call for globally applicable strategies that permit a timely diagnosis of AKI and provide access to renal replacement therapy for patients with potentially reversible diseases.

“Our goal is to dramatically curtail AKI-associated mortality,” says Remuzzi. The Oby25 Executive Committee, supported by six dedicated Oby25 Project Teams and made up of leading nephrologists globally, is comprehensively working to make this goal a reality.

“The first major task for Oby25 is to collect strong data, existing and prospective, to demonstrate the burden of AKI globally,” explains Ravindra Mehta, Oby25 Project Leader and a leading nephrologist and AKI specialist from University of California, San Diego (USA). “Building on this evidence, we will also be focusing on raising awareness, through information materials and toolkits, and on the development of ‘need-driven approaches’ by implementing pilot projects in selected areas for education, training and care delivery,” he adds.

“The current lack of global data on the burden of AKI is one of the key challenges, which prevents us from making a strong case for those patients dying in vain,” concludes Remuzzi. **“We need support from across the world to collect this data and we strongly encourage our ISN colleagues to participate in these ambitious research projects.”**

Nephrologists who would like to register their clinic or hospital to take part in the Global Snapshot or AKI Cohort Study are encouraged to register online at www.Oby25.org or contact ISN at Oby25@theisn.org.



Global Survey on AKI diagnosis and treatment

As a first step, in June 2014, ISN distributed the Global Survey on AKI diagnosis and treatment to more than 10.000 nephrologists and healthcare professionals. The survey is a key part to prepare two major Oby25 research projects:

- Global snapshot: a cross-sectional study of AKI patients with enrollment and follow up over a period of six weeks from September 29 to November 9, 2014
- AKI cohort study: a longitudinal cohort study of AKI patients followed over a period of at least three months

Visit
www.Oby25.org

YNC Corner

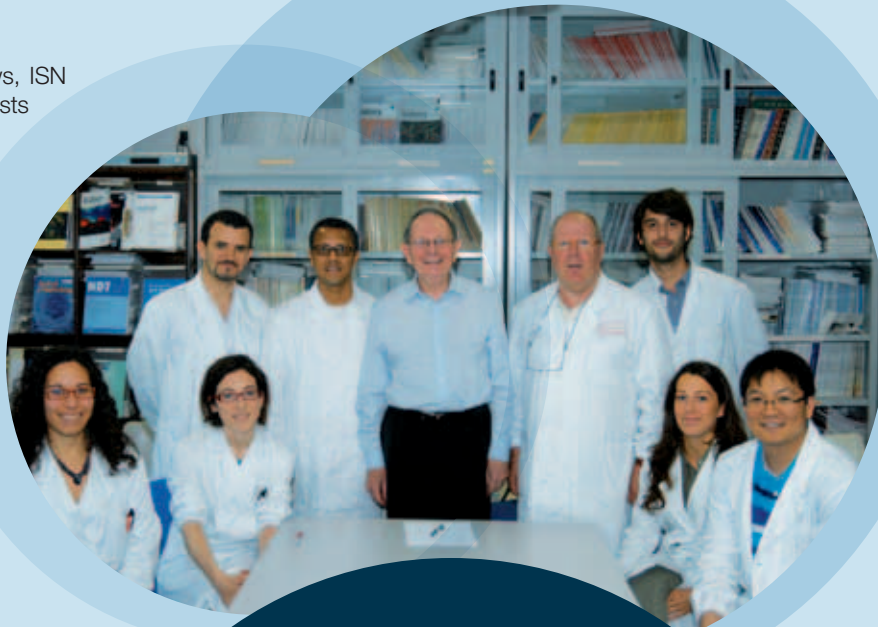
To encourage younger generations to get involved in ISN activities, free membership is now available to members in training.

As we highlighted in the previous edition of ISN News, ISN has put great efforts into getting more young nephrologists involved in the Society by offering them training and leadership opportunities. Since its establishment, the ISN Young Nephrologists Committee (YNC) has set out to empower younger generations particularly from developing countries with programs geared at education, mentoring, and support.

There is further good news on the horizon as ISN is now offering free membership for members-in-training. Trainees in nephrology, aged 37 and younger, are encouraged to apply for the free ISN In-Training Membership.

Members receive all member benefits except print copies of *Kidney International*. All other benefits apply. Eligible individuals must submit a copy of a valid form of identification stating their date of birth as well as proof of their current training status. Those who fit the criteria are encouraged to submit their application online. Submissions of the required files are done online via upload to the established member profile. A review process has been put in place to ensure qualifications for this free membership category.

Current In-Training Members will benefit from the free membership offer at the time of their membership renewal.



Here is a round-up of some of the benefits you will receive when you join:

- Online access to *Kidney International* and *Nature Reviews Nephrology*, ISN News and nephrology updates
- Reduced rates for world-renowned events (World Congress of Nephrology, ISN Nexus and Forefronts symposia)
- Access to ISN Education and collaborative resources
- Eligibility for ISN capacity-building programs and society committees

Find out more:
www.theisn.org/benefits/itemid-558

To find out more head to the membership section of the ISN website: www.theisn.org/join

Celebrating two years of sharing knowledge

To mark ISN Education's second anniversary, the Education Committee looks back at the e-portal's achievements in its adolescent years.

So far, ISN Education has presented over 658 content pieces on its web portal. These resources include everything from interactive presentations with guideline commentaries to an entire virtual library of microscopic images and interventional nephrology videos.

When conceiving ISN Education, Committee Chair David Harris emphasized that it should "not only be an excellent resource for professional growth, but also an effective channel to access experts and exchange experiences." This being said, the resources emerge from strong collaborations with nephrologists worldwide.

A recent partnership with Lise Bankir at the Cordelier Research Centre in Paris helped to release a collection of annotated images on vascular-tubular relationships in the mammalian kidney, which complements the excellent pathology images provided by Agnes Fogo from Vanderbilt University. Collaboration with Francesca Tentori from the Arbor Research Collaborative for Health produced an online commentary on the results from the Dialysis Outcomes and Practice Patterns (DOPPS) study.

Content also surfaces from industry and institutional partnerships. One example is Danone Nutricia Research and the International Society of Renal Nutrition and Metabolism, who provided a large collection of video presentations on the latest scientific advances in the field of renal nutrition and metabolism as they relate to patients with kidney diseases. Another exciting partnership is with Cochrane Renal Group, who will begin a quarterly journal club involving slides, podcasts, articles and commentary on the latest research developments in nephrology.

Not only are the educational resources growing but the audience too. Web-traffic statistics indicate that since ISN Education's launch, the number of average monthly visits to the ISN Gateway has increased by 60%, with more than 60,000 pages viewed each month. To make it easier to navigate these pages of content, a new sophisticated search engine has been developed.

ISN Education's audience is very international in nature, with its highest number of visits coming from the US, India, Japan, Brazil and the UK. As the audience comes from 160 countries across five continents, the Education Committee has been challenged with developing ways to best serve such a broad group of nephrologists.

One solution has been through monthly webinars, run by ISN experts such as Nathan Levin and Jochen Raimann from the Renal Research Institute, who recently discussed the Value of Sodium Restriction in Dialysis Patients. While having just begun a few months ago, webinar attendance already averages between 50-100 people for each event. With such encouraging results, ISN Education now has a webinar timetable extending as far as early 2015.

Find out more about
ISN Education:
www.theisn.org/education



ISN upcoming events

ISN Events connect global medical communities, giving them the knowledge and support to reduce the impact of kidney disease worldwide.

WCN 2015: abstract submission season is open

Abstract submissions are now open for the World Congress of Nephrology (WCN) 2015 taking place in Cape Town, South Africa from March 13 to 17, 2015. You can submit your abstracts online at www.wcn2015.org/abstracts.

WCN 2015 Scientific Program Committee Chair Pierre Ronco explains the challenge of featuring excellence in medical science while meeting the unmet needs of emerging countries particularly in Africa. He says: *"We are focusing on burning topics for these countries such as infectious risk factors, hypertension, diabetes, pregnancy, perinatal and pediatric issues as well as acute kidney injury with a translational approach from bench to bedside."*

Aside from an exciting line-up of plenary speakers, the congress will also feature slots for short oral presentations to increase interaction with the audience, French and English CNEs, a renal pathology pre-course addressing renal pathology challenges and solutions in Africa and beyond, and a series of hands-on sessions at the Red Cross Hospital in Cape Town.

In addition, WCN 2015 features specific program topics and sessions for allied health professionals including the first Allied Health Professionals Symposium taking place on Friday, March 13, 2015.



WORLD
CONGRESS
OF NEPHROLOGY

**WCN
2015**

CAPE TOWN
MARCH 13-17, 2015



ISN Forefronts 2014

Genetic Basis of Renal Disease

September 11-14, 2014, Boston, USA

www.isnforefronts.org/boston



ISN Nexus 2014

Hypertension and the Kidney

September 25-28, 2014, Brisbane, Australia

www.isnnexus.org/brisbane



World Congress of Nephrology 2015

Sustainability & Diversity

March 13-17, 2015, Cape Town, South Africa

www.wcn2015.org



For the full list
of ISN events
visit
www.theisn.org

ISN WORLD CONGRESS OF NEPHROLOGY 2015

March 13-17, 2015

Cape Town

www.wcn2015.org



WORLD
CONGRESS
OF NEPHROLOGY

**WCN
2015**

CAPE TOWN,
MARCH 13-17, 2015

Sustainability
and
Diversity

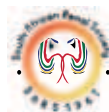


An event by



Advancing Nephrology Around the World

Hosted by



In partnership with

