



THIS IS
ISN

Advancing Nephrology
Around the World



About ISN

The International Society of Nephrology (ISN) is a global not-for-profit membership-based society dedicated to improving kidney care and reducing the incidence and impact of kidney disease worldwide. Through its global network and programs, ISN brings together the developing and developed worlds in a collaborative effort in fighting and treating kidney disease on a global scale.

With 9,000 professional members from 129 countries, ISN represents a wide international network. It provides an efficient platform for timely scientific exchange, debate and communication between all healthcare professionals involved in preventing and treating kidney disease. By collaborating with over 70 national and regional societies, ISN represents about 20,000 professionals around the globe.

Since 1960, the ISN has been providing nephrologists worldwide with highly valuable services, such as publications, meetings, capacity-building programs, and has been spearheading concerted awareness-generating efforts such as World Kidney Day.



ISN Vision, Mission and Values

Vision

ISN aspires towards the elimination of kidney disease worldwide.

Mission

ISN is dedicated to advancing the diagnosis, treatment, and prevention of kidney diseases in the developing and developed world. It will achieve this philanthropic mission through collaborations, meetings, publications, outreach, and other activities that:

- Raise public awareness of the importance of early recognition and treatment of kidney diseases
- Connect professionals interested in kidney and related diseases around the world
- Support research to achieve optimal care of people with kidney diseases
- Provide nephrology education and training worldwide; and ultimately
- Reduce the frequency and impact of kidney diseases and their associated conditions

Values

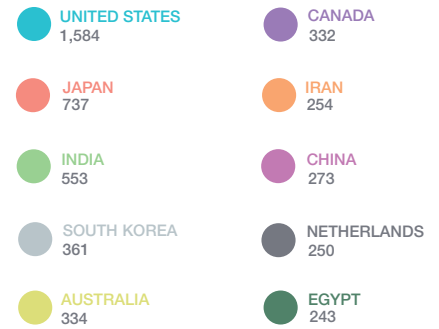
The International Society of Nephrology:

- Values new knowledge and is committed to excellence in research, education, and patient care in the developed and developing world
- Will always act in a way that is politically neutral, humanitarian, and culturally diverse
- Values collegiality and interaction and is committed to diversity in membership, governance, committee structure, and programmatic activities
- Is committed to the scientific basis of nephrology and to advancing knowledge across all geographic, national, racial, religious and economic conditions

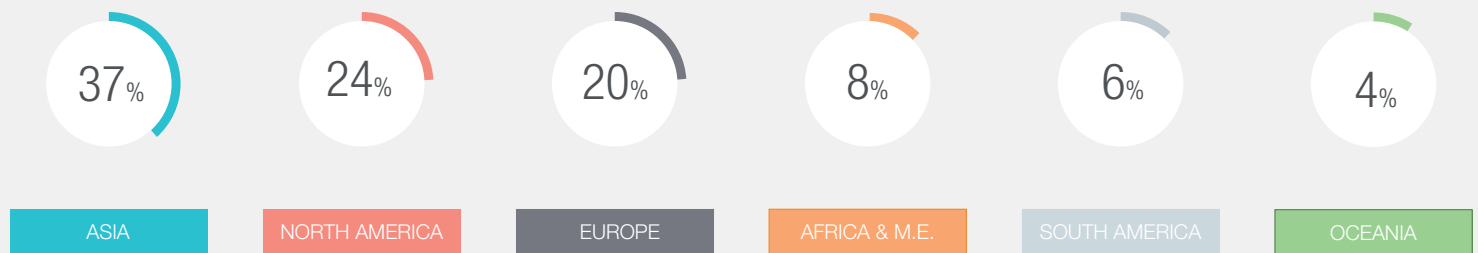
Our Members



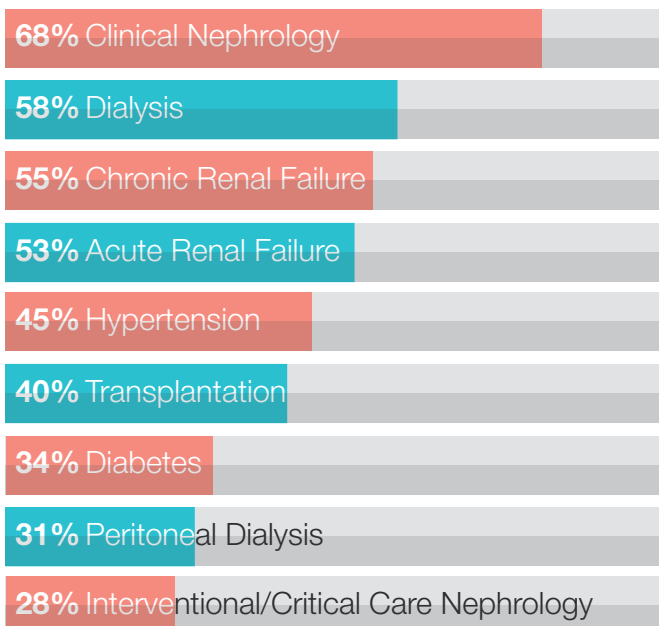
Top 10 Countries (figures for 2015)



Regional Breakdown

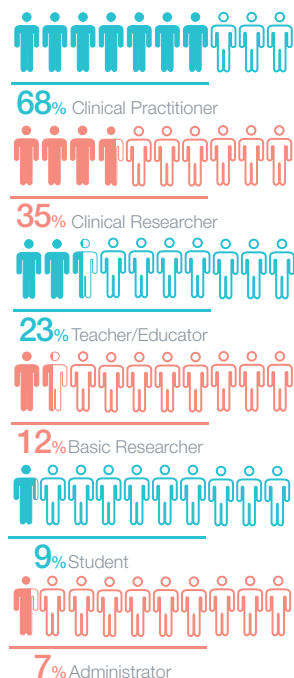


Professional Interest*



* Multiple answers possible

Area of Activity*



Publications

Kidney International (KI)

Kidney International (KI), ISN's official journal, is one of the most cited in nephrology and widely regarded as the world's premier journal on the development and consequences of kidney disease. KI is peer-reviewed and publishes original research in both basic science and clinical medicine. It aims to inform the renal researcher and the practicing nephrologist on all aspects of renal research. Kidney International Supplements, the peer-reviewed companion journal to KI, focuses on topical content of interest to the nephrology community.

www.theisn.org/ki

8.563
IMPACT FACTOR
(in 2015)

6780
CIRCULATION
(in 2015)

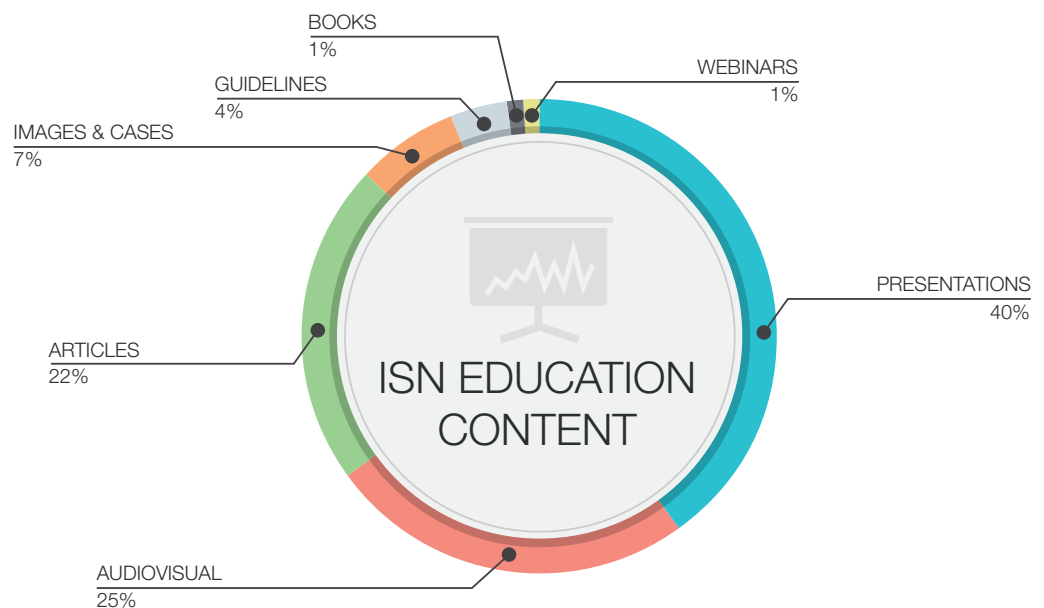
ISN Education

ISN Education is a comprehensive collection of educational resources with a database of articles, case studies, guidelines, presentations, and images. It also includes special resources like Ask the Experts and Global Outreach Postings. ISN Education integrates ISN's educational activities, making training more accessible to nephrologists in developed and developing countries.

www.theisn.org/education

+1 000
content pieces
available

18
topical channels
available



Scientific Support

ISN provides both financial support and guidance through its many committees, including:

- **Acute Kidney Injury Committee** develops uniform standards for defining and classifying Acute Kidney Injury (AKI) that can be used in clinical research (trials) in patients with AKI and provides consensus standards for diagnosing and classifying (staging) AKI.
- **Dialysis Committee** develops treatment programs for AKI in the developing world including training of individuals in dialysis.
- **Interventional Nephrology Committee** provides topical information and the best educational tools for the professional and successful performance of all aspects of interventional nephrology.
- **Renal Pathology Committee** participates in and facilitates CME activities, organizes courses and master classes, and awards grants to centers of pathological excellence.
- **Renal Disaster Relief Task Force (RDRTF)** provides essential renal aid to people in the wake of natural disasters.

Meetings

| World Congress of Nephrology

WCN is the leading biennial educational event in international nephrology, attracting attendance from the worldwide nephrology community as well as other healthcare professionals involved in multidisciplinary nephrology care. It not only features a world-class scientific program but also reflects the unique role of ISN's efforts in advancing renal care in the developing and developed world.

www.wcn2017.org



| ISN Forefronts Symposia

ISN Forefronts Symposia focus on emerging and groundbreaking research. They gather nephrologists and active investigators from surrounding medical areas to explore new scientific domains and review the latest developments in kidney disease.

www.isnforefronts.org



| ISN Nexus Symposia

ISN Nexus Symposia bridge the gap between basic research and clinical practice and offer a profound focus on translational medicine and clinical application. The Nexus symposia aim to address the increasingly multidisciplinary approach to kidney health issues.

www.isnnexus.org



ISN Programs

The ISN works to alleviate the growing socio-economic burden of kidney disease through a portfolio of global initiatives to enhance nephrology through education and research. These global initiatives are organized and managed through the ISN Programs, which identify the educational and clinical needs in emerging countries and offer valuable training and educational activities for kidney specialists of all levels.

Sister Renal Centers Program (SRC)

The Sister Renal Centers Program (SRC) links renal centers in emerging countries with supporting centers of excellence in the developed world. With this educational support and guidance, self-sufficient renal centers are created in emerging countries.

Each year, the SRC Program provides funding and education to 50 sister-center pairs.

Application Deadline: October 1

www.theisn.org/src

Fellowship Program

The Fellowship Program helps educate physicians coming from emerging economies, giving them hands-on training opportunities unavailable in their home nations. Fellows are sponsored for a period of 3 to 12 months to train in a developed renal center, after which they return to their home country to implement their knowledge and improve standards of care there.

Since the beginning of the Program, over 700 ISN-trained nephrologists from developing countries have taken on leading healthcare positions in their regions.

Application Deadline: May 1 and October 1

www.theisn.org/fellowship

CME Program

The Continuing Medical Education Program (CME) brings essential teaching and training to some 14,000 doctors in over 40 settings every year. CME meetings take place in the developing world, where expert speakers from the developing and the developed world share their knowledge and experience in clinical care and research.

Each year, some 50 CME courses take place in over 30 countries, providing high-quality updates and clinical knowledge to 14,000 renal healthcare providers.

Applications: Throughout the year

www.theisn.org/cme

Educational Ambassadors Program

The Educational Ambassadors Program sends experts to developing renal centers for one to four weeks to provide hands-on training or help develop new services, community-based research or screening programs.

Since the launch of the program in 2010, over 80 Educational Ambassadors have been mobilized.

Application Deadline: May 1 and October 1

www.theisn.org/eap

Clinical Research Program

The Clinical Research Program aims in part to educate people in developing countries about the importance of having healthy kidneys. Many of the projects funded through the program set up screening and education to raise awareness and improve the understanding of kidney disease.

Over 65 research, prevention and screening programs in 19 emerging countries have been implemented.

Application Deadline: May 1 and October 1

www.theisn.org/cr

ISN Programs Numbers

Graduated SRC Pairs



\$1,887,975 USD

INVESTED BY ISN ON PROGRAMS IN 2014

68 CLINICAL RESEARCH
PROGRAMS
SINCE 2005

695 FELLOWS
SINCE 1995

87 EDUCATIONAL
EVENTS
SINCE 2010

259 CMEs
SINCE 2010

ISN Programs Budget 2014



Oby25

Oby25 is an ISN human rights initiative which calls for globally applicable strategies that permit timely diagnosis and treatment of Acute Kidney Injury (AKI) for patients with potentially reversible diseases. Its overarching goal is to achieve zero preventable deaths from AKI by 2025. This is a global initiative with a strong emphasis on middle and low income countries in **Africa, Asia, and Latin America** and their disadvantaged populations with poor access to care.

Evidence

Oby25 aims to address the current information gap and to demonstrate the global burden of AKI by collecting new and existing data on the incidence, diagnosis, management and treatment of this disease.

WHAT WE DO

- ISN has produced a Global Snapshot of AKI, a global, cross-sectional study carried out simultaneously in hundreds of centers around the world in order to better understand the growing AKI burden

Awareness

Oby25 aims to raise awareness of AKI through education and training across the global healthcare community, including among healthcare professionals, patients and, more widely, among governments and public health institutions and the private sector.

WHAT WE DO

- ISN is mapping and developing AKI education and awareness raising tools aimed at patients, healthcare professionals and governments, which can be adapted for use in every region in the world.

Action

Oby25 aims to establish a sustainable infrastructure for prevention, education and training, detection and management of AKI, which can be implemented according to local needs and resources.

WHAT WE DO

- ISN is developing Pilot Projects to test six interventions under a common framework aimed at improving AKI detection and management in selected centers in Asia, Africa and South America.

www.Oby25.org

2.62m
«In 2010, 2.62 million people around the world were receiving regular dialysis for kidney failure. In 2030, that number is expected to have more than doubled, to 5.4 million.»

5.4m



Oby25
AN ISN HUMAN RIGHTS INITIATIVE

20
«Endorsed by more than 20 national and regional nephrology societies»

25%
«25% of patients lack proper access to dialysis»*

These and other ISN programs work together to vastly improve standards of renal care in less developed countries. ISN members also contribute to and lend support to the educational and humanitarian work needed to further advance kidney care worldwide.

* according to the findings of the AKI Global Snapshot

** George Institute for Global Health Press Release, March 2015.

Awareness



World Kidney Day

World Kidney Day (WKD), a joint initiative of the ISN and the International Federation of Kidney Foundations (IFKF) informs and educates health policy-makers, medical staff, and the general public worldwide about chronic kidney disease to drive the earliest possible diagnosis and optimal treatment.

The mission of WKD is to raise awareness of the importance of our kidneys to our overall health and to reduce the frequency and impact of kidney disease and its associated health problems worldwide.

Achievements: World Kidney Day has grown to become a worldwide success with local WKD activities taking place in more than 150 countries. It has achieved global media coverage, impressive prominence on social networks, and most importantly, catalyzed meetings between renal patients, medical professionals and government health authorities in many countries.

www.worldkidneyday.org



WKD 2015 Campaign Figures

29,600

Fans on **FACEBOOK**

5,223

Followers on **TWITTER**

63,009

Views on **YOUTUBE**

50,000,000
people reached

Participating Countries by Region



90+
countries

560+
events organised

Events by Countries (Top 5)

United Kingdom	75
India	62
Brazil	54
Spain	39
Indonesia	39

Scientific Editorial
The 2015 Scientific Editorial was published in 50 scientific journals.

50
journals

Important Events



Empire State Building lit up in Orange on March 12, 2015 to celebrate World Kidney Day



Christ the Redeemer in Rio de Janeiro was lit up for World Kidney Day



Parliamentary breakfast and roundtable at Parliament House in Canberra, Australia for World Kidney Day



Pan-American Health Organisation & SLANH organised a webinar as part of their activities on World Kidney Day



Drink a Glass of Water

Drink a Glass of Water was the 2015 campaign call-to-action, encouraging people to take a picture of themselves and sharing it on social media to help draw attention to the issue



4,000
Pictures Shared



2,000,000
People Reached

Collaborations

The Society's vision of reducing the incidence and impact of kidney disease worldwide has led to strategic partnerships and collaborations. To establish a more effective network among renal organizations worldwide, ISN has intensified relationships with national and regional renal societies by creating formal affiliations. ISN now collaborates with 78 national and regional nephrology societies around the world, representing about 20,000 professionals. In addition, ISN collaborates with many organizations around the world.



In official relations with the World Health Organization (WHO) to influence global health policy and represent the diverse challenges of nephrology on the world stage.



Supporting the dissemination of Kidney Disease: Improvement of Global Outcomes (KDIGO) guidelines to improve the care and outcomes of kidney disease patients worldwide.



In partnership with the International Pediatric Nephrology Association (IPNA) to promote education in the developing countries.



Working with the Transplantation Society (TTS) in setting up the Istanbul Declaration on Organ Trafficking and Transplant Tourism enforcing standards and prohibiting unethical practices worldwide.



Collaborating with the International Society of Peritoneal Dialysis (ISPD) in proving better care opportunities for low-resource health settings to look after AKI patients.



Educational partnership with the American Society of Diagnostic and Interventional Nephrology (ASDIN) to promote and improve the understanding and management of clinical issues concerning dialysis access care.



The Lancet is collaborating with ISN in promoting the results of the 0by25 Global Snapshot.

Corporate Members

The ISN Corporate Members Committee consists of high level representatives from prominent companies active in the field of nephrology. The objective of the Corporate Members Committee, as a consultative committee of the ISN, is to assist the Society in achieving its mission and in a wider sense to promote the knowledge and understanding of the role of the kidney in disease and health, as well as increase awareness about kidney disease and promote collaborations with other relevant specialties or stakeholders.



Make a difference - get involved

I Through Membership

ISN members work in collaboration with other nephrologists and help advance kidney care around the world. In addition, members receive many valuable benefits that significantly help them personally and professionally. They experience and support the ISN activities that contribute to improving the conditions and outcomes of people living with kidney disease. They learn more about new and diverse cultures and healthcare systems, giving them a better understanding of worldwide nephrology issues. And, by taking part in capacity-building programs, ISN members develop and contribute to renal knowledge within local communities and enhance their scientific knowledge through the diverse ISN education activities. Being part of ISN is not just about what members receive as part of their membership but also what they give. Members' involvement contributes to the Society's philanthropic and humanitarian activities, which greatly influence kidney disease diagnosis and treatment globally.

Member Benefits

Access to Leading Scientific Journals in Nephrology

- Kidney International
- Kidney International Supplements

Reduced Rates at World Renowned Events

- ISN World Congress of Nephrology
- ISN Nexus Symposia
- ISN Forefronts Symposia

Access to ISN Educational & Collaborative Resources

- ISN Education
- ISN Member Directory

Eligibility for ISN Capacity-Building Programs and Society Committees

- ISN Programs
- ISN Committees

Access to Society News and Nephrology Updates

- ISN News
- ISN Insight
- ISN Gateway
- ISN Social Media

www.theisn.org/join

I Through Sponsorship & Support

As one of the leading organizations in providing access to nephrology education and training around the world, ISN welcomes partnerships with non-commercial and commercial entities to deliver its important healthcare mission. ISN's many programs and activities offer countless possibilities for interested partners to collaborate with the Society. Specific opportunities are available via ISN's publications, meetings, capacity-building programs as well as many others.

www.theisn.org



Global Operations Center **Americas Operations Center**

Rue des Fabriques 1
1000 Bruxelles, Belgium
Tel: +32 2 808 04 20
Fax: +32 2 808 44 54

info@theisn.org

340 North Ave 3rd Floor
Cranford, NJ 07016, USA
Tel: +1 567 248 9703
Fax: +1 908 272 7101

info@theisn.org



www.theisn.org